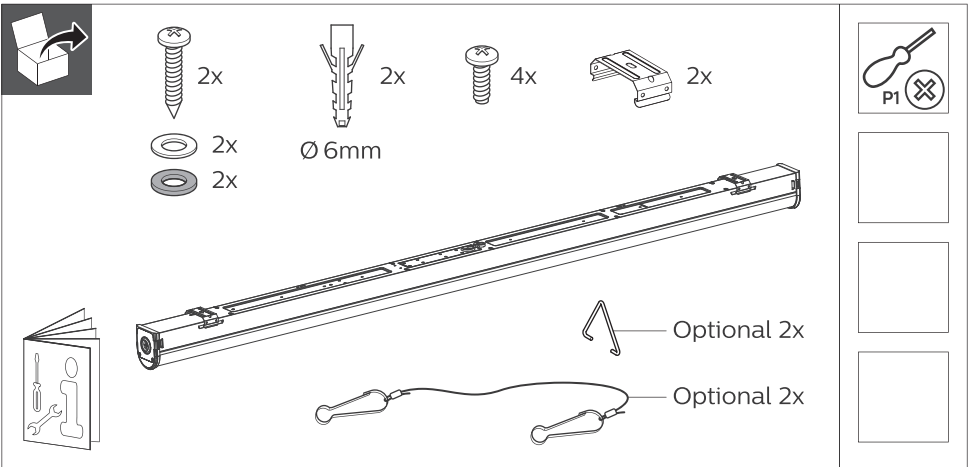


BARDSEY BATTEN LITE PRODUCT INSTRUCTIONS



220V
240V

50Hz
60Hz

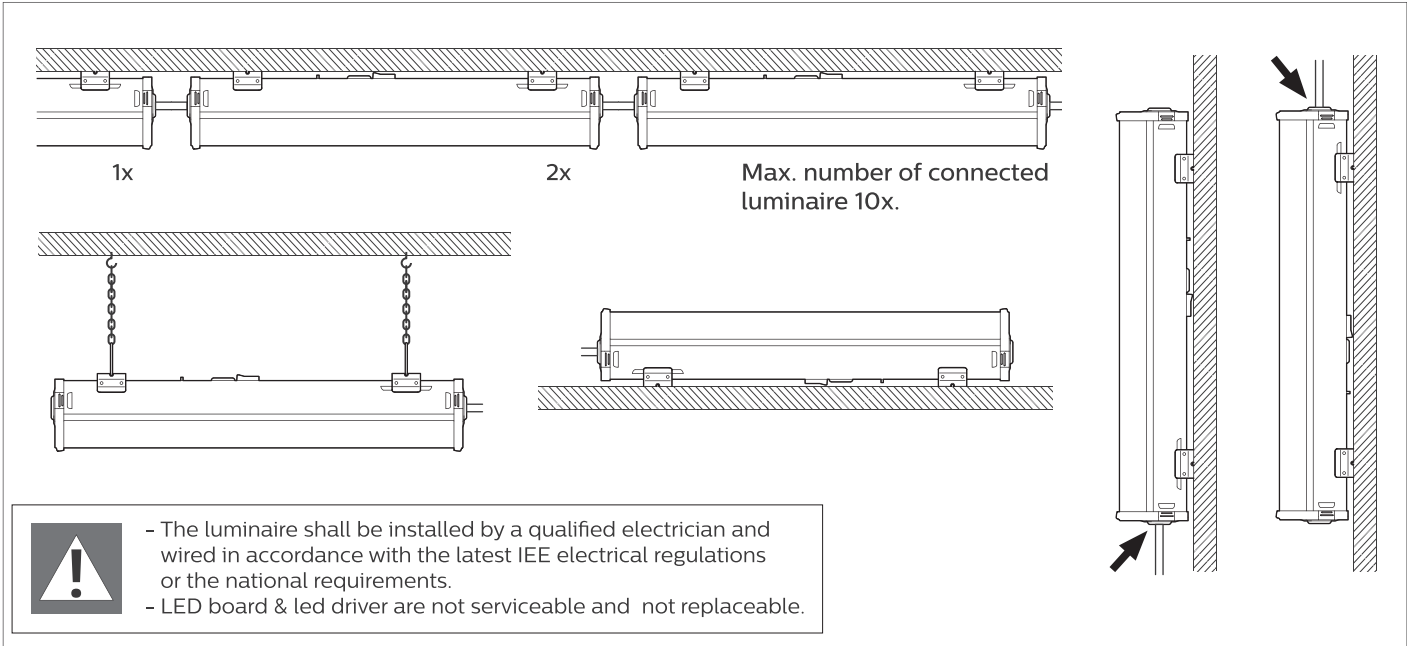
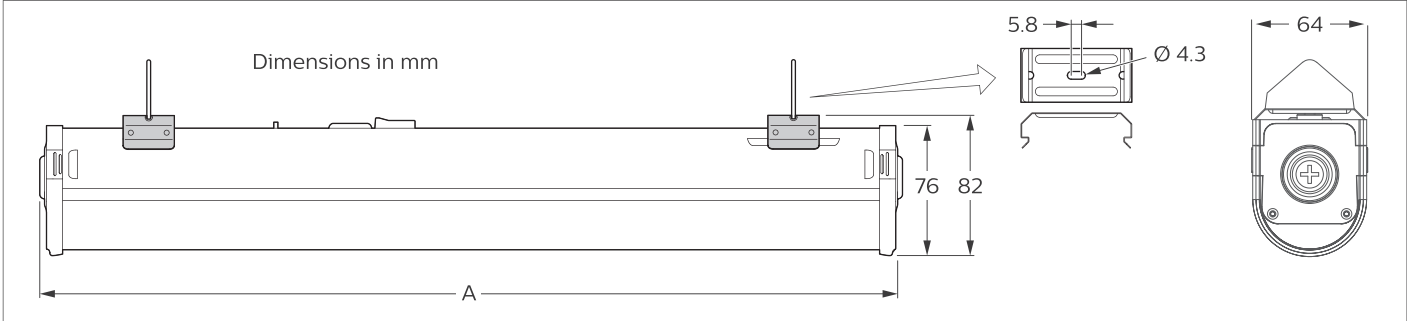


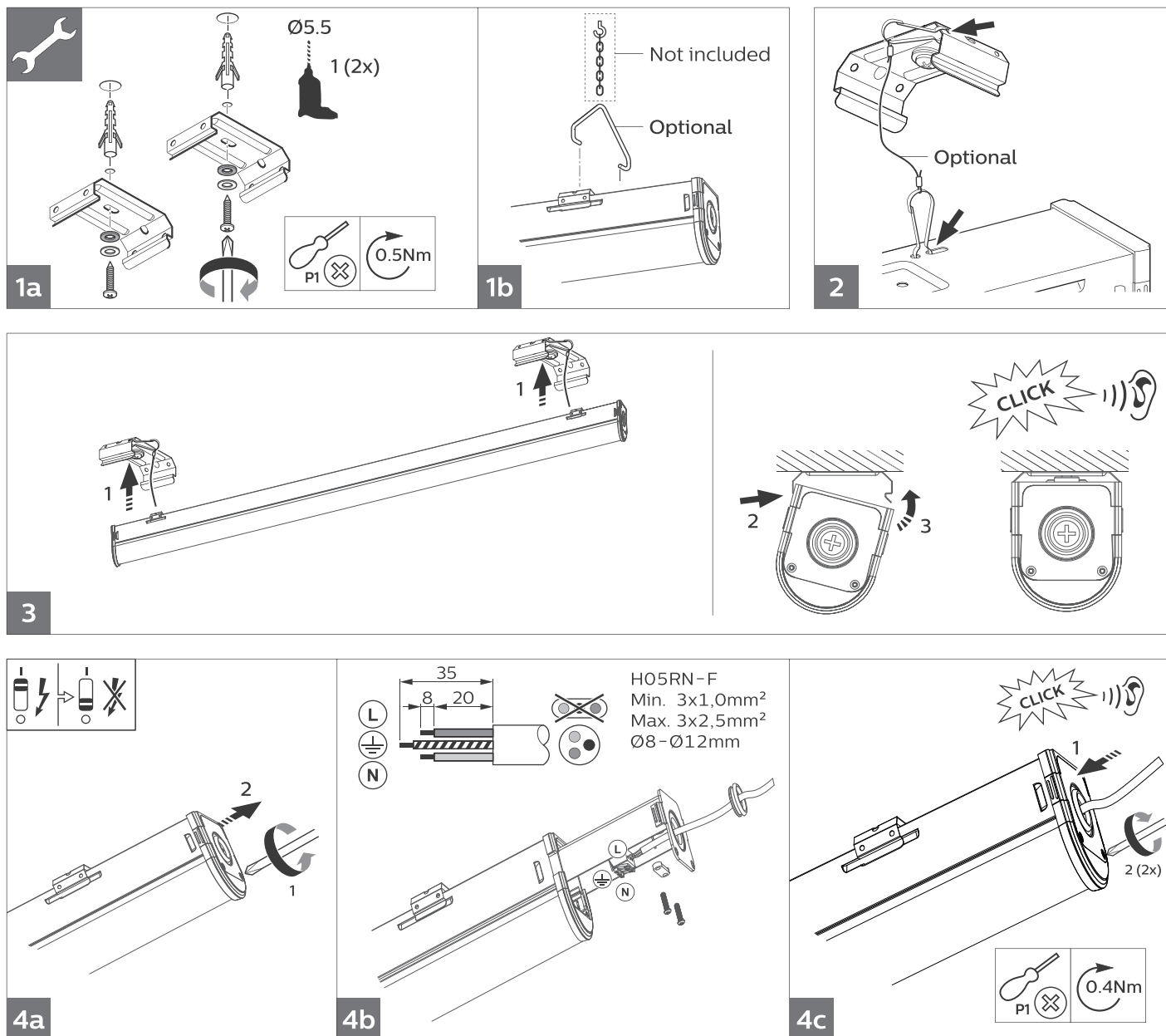
IP20

GLOW
WIRE
850 °C



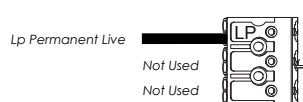
	P (W)	A(mm)	kg
BTN025	18	1133	1.60
BTN026	36		
BTN027	30	1415	2.00
BTN028	55		
BTN029	40	1726	3.00
BTN030	80		



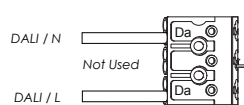


Wiring Instructions

Emergency - Before first use, ensure battery is connected.



DALI



For Switch Dim wiring, connect a permanent live to L1 and wire supply from retractive switch (push to make) to DALI / L. Also link between N and DALI / N.