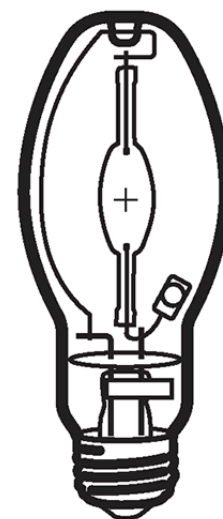


**HIE 150W/U/GDX**
**Product Number: 33520**
**Lamp Type:** Designer Color

**Control Gear:** HPS Ballast + Ignitor

**Performance Data**

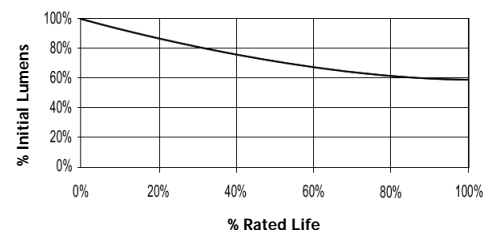
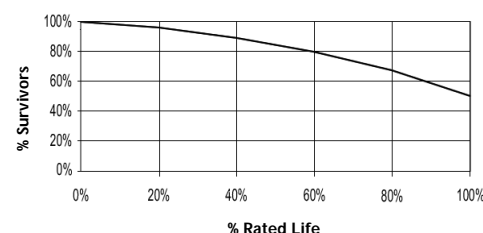
Dominant Wavelength	535
% Saturation	46
Rated Life (Hrs. @ 10 Hr. /Start)	5000
Correlated Colour Temperature (K)	-
Chromaticity (CIE - X Y)	255, 533
Colour Rendering Index (CRI) or (Ra)	N/A
Typical Warm Up Time (Minutes)	1-2
Typical Hot Restart Time (Minutes)	2-4
Burning Position	Universal


**Physical Data / Requirements**

Base Designation	E27
Bulb Designation	E54
Bulb Diameter (mm)	54
Max. Overall Length (mm)	141
Light Centre Length (mm)	89
Effective Arc Length (mm)	27
Max. Base Temperature (°C)	210
Max. Bulb Temperature (°C)	400
Luminaire Type	Enclosed
Socket Pulse Rating (KV)	4.5

**Lamp Electrical Data / Requirements**

IEC Standard	-
Lamp Wattage (W)	150
Lamp Operating Voltage (V)	95
Lamp Operating Current (Amps)	1.8
Min. Open Circuit Voltage (RMS)	198
Min. - Max. Starting Pulse (Peak V)	3000-4500
Min. Pulse Width at 2700V (microseconds)	1
Min. Pulse Rate Per ½ cycle	1
Pulse Position (Electrical Degrees)	60-90, 240-270

**Lumen Maintenance**

**Lamp Mortality**

**Revision:** 28/02/2006

**Notes:**

The specification contains data about typical performance on 50Hz sine wave ballast at nominal power. Actual values may depend on ballast and applications. Complies with (CE), Low Voltage (CE), WEEE and RoHS Directives.