

Lamp Current (A): 1.8A  
 Ignitor Voltage: 3.5-6KV  
 Luminaire Rating: Enclosed  
 Burning Position: Horizontal±45°

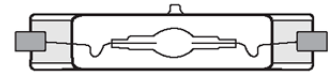
**MH-DE 150W/UVS/3K**
**Product Number: 11295**

**Lamp Type:** Double Ended Rx7s

**Control Gear:** HPS Ballast + Ignitor / Electronic

**Performance Data**

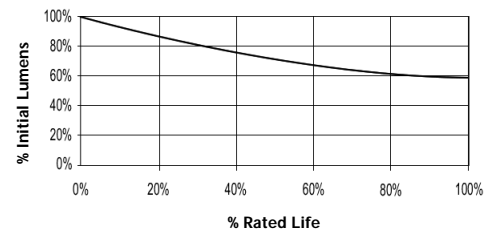
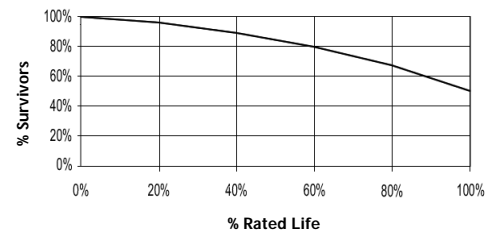
Light Output (Lumens @ 100 hours)	11250
Lamp Lumens Per Watt	75
Rated Life (Hrs. @ 10 Hr. /Start)	10000
Correlated Colour Temperature (K)	3000
Chromaticity (CIE - X Y)	435, 400
Colour Rendering Index (CRI) or (Ra)	70
Typical Warm Up Time (Minutes)	1-2
Typical Hot Restart Time (Minutes)	2-4
Burning Position	Horizontal±45°


**Physical Data / Requirements**

Base Designation	Rx7s
Bulb Designation	T23
Bulb Diameter (mm)	23
Insertion Length (mm)	135.4
Contact to Contact Length (mm)	132
Effective Arc Length (mm)	15
Max. Base Temperature (°C)	280
Max. Bulb Temperature (°C)	650
Luminaire Type	Enclosed
Socket Pulse Rating (KV)	6

**Lamp Electrical Data / Requirements**

IEC Standard	61167
Lamp Wattage (W)	150
Lamp Operating Voltage (V)	95
Lamp Operating Current (Amps)	1.8
Min. Open Circuit Voltage (RMS)	198
Min. - Max. Starting Pulse (Peak V)	3500-6000
Min. Pulse Width at 3200V (microseconds)	1
Min. Pulse Rate Per ½ cycle	1
Pulse Position (Electrical Degrees)	60-90, 240-270

**Lumen Maintenance**

**Lamp Mortality**


**Revision:** 28/02/2006

**Notes:**

The specification contains data about typical performance on 50Hz sine wave ballast at nominal power. Actual values may depend on ballast and applications. Complies with (CE), Low Voltage (CE), WEEE and RoHS Directives.