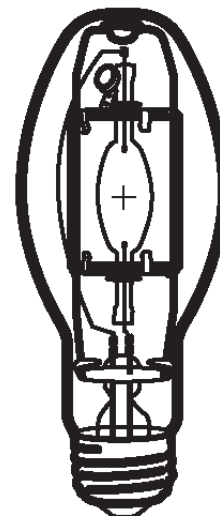


HIPE 150W/U/LU/UVS/4K
Product Number: 10006
Lamp Type: White-Lux Plus

Control Gear: HPS Ballast + Ignitor

Performance Data

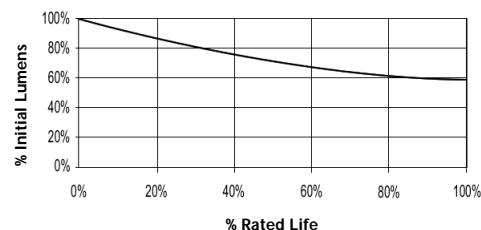
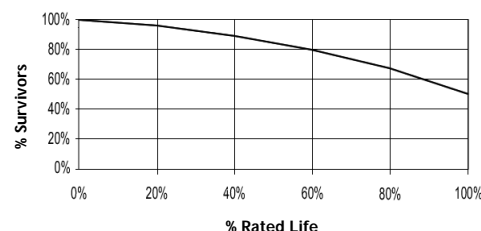
Light Output (Lumens @ 100 hours)	13300V / 12000H
Lamp Lumens Per Watt	89
Rated Life (Hrs. @ 10 Hr. /Start)	15000V / 11250H
Correlated Colour Temperature (K)	4000
Chromaticity (CIE - X Y)	385, 390
Colour Rendering Index (CRI) or (Ra)	65
Typical Warm Up Time (Minutes)	1-2
Typical Hot Restart Time (Minutes)	3-5
Burning Position	Universal


Physical Data / Requirements

Base Designation	E27
Bulb Designation	EX54
Bulb Diameter (mm)	54
Max. Overall Length (mm)	141
Light Centre Length (mm)	89
Effective Arc Length (mm)	19
Max. Base Temperature (°C)	210
Max. Bulb Temperature (°C)	400
Luminaire Type	Open/Enclosed
Socket Pulse Rating (KV)	4.5

Lamp Electrical Data / Requirements

IEC Standard	-
Lamp Wattage (W)	150
Lamp Operating Voltage (V)	95
Lamp Operating Current (Amps)	1.8
Min. Open Circuit Voltage (RMS)	198
Min. - Max. Starting Pulse (Peak V)	3000-4500
Min. Pulse Width at 2700V (microseconds)	1
Min. Pulse Rate Per ½ cycle	1
Pulse Position (Electrical Degrees)	60-90, 240-270

Lumen Maintenance

Lamp Mortality

Revision: 28/02/2006

Notes:

The specification contains data about typical performance on 50Hz sine wave ballast at nominal power. Actual values may depend on ballast and applications. Complies with (CE), Low Voltage (CE), WEEE and RoHS Directives.